

R1370

ROTATING TELEHANDLER



KEY FEATURES & BENEFITS

- 3-in-1 Capability: Along with material handling, rotating telehandlers function as mobile elevating work platforms and rough-terrain cranes.
- Confidence-Inspiring Technology: Features automatic attachment recognition, a Load Management Information System (LMIS) and Load Stability Indicator (LSI).
- 360-Degree Continuous Rotation: Full rotation of the upper frame allows for both horizontal and vertical lifting.
- Standard Attachments and Accessories: 48-in standard carriage and forks, outrigger pads, LED worklights, and boom camera.

ATTACHMENTS

| | |
|-------------------------------------|-------------------------------------|
| General Purpose Bucket | 94.5-in, 2.0-cu yd |
| Truss Boom | 8-ft / 2.4-m |
| Truss Boom with Winch | 9-ft / 2.7-m |
| Standard Carriage | 48-in / 1.2-m |
| Fork Positioning Carriage | 48-in / 1.2-m |
| 360 Degree Rotating Carriage | 48-in / 1.2-m |
| Work Platform | 7-ft / 2.1-m |
| Extendable Trilateral Work Platform | 8-ft to 13-ft 6-in / 2.4-m to 4.1-m |
| Coupler Mounted Winch | 11,000-lb / 4,990-kg |
| Coupler Mounted Hook | |

ACCESSORIES & OPTIONS

- Brick Guard
- Hydraulic Coupler
- Dual Auxiliary Hydraulics
- White Noise Back Up Alarm

STANDARD SPECIFICATIONS

Performance

| | |
|------------------------------------|-----------------------|
| Rated Capacity | 13,200-lb / 6,000-kg |
| Maximum Lift Height | 67-ft / 20.5-m |
| Load at Max Height | 5,500-lb / 2,500-kg |
| Maximum Forward Reach | 59-ft 6-in / 18.1-m |
| Load at Max Reach | 1,500-lb / 700-kg |
| Frame Leveling | ±5.5 Degrees |
| Lift Speed (boom retracted) – Up | 21.9 seconds |
| Lift Speed (boom retracted) – Down | 13.8 seconds |
| Boom Speed – Extended | 31.2 seconds |
| Boom Speed – Retracted | 17.4 seconds |
| Top Travel Speed (Foam-Filled) | 12.4 mph / 20 km/h |
| Drawbar Pull (loaded) | 22,500-lb / 100-kN |
| Outside Turning Radius | 14-ft 6-in / 4.4-m |
| Operating Weight | 42,410-lb / 19,237-kg |

Engine

| | |
|----------------------------|---------------------------|
| Make and Model | Perkins 904J-E36TA StageV |
| No. of Cylinders | 4 |
| Displacement | 221 cu in / 3.6 L |
| Gross Power Basic | 134 hp / 100 kW |
| Maximum Torque @ 1,500 rpm | 406 lb-ft / 550 Nm |
| Fuel Tank Capacity | 47.5 gal / 180 L |

Transmission

Hydrostatic 2-speed

Axles

Trunnion mounted planetary 35-Degree steer axles
High bias limited slip differential on front axle

Brakes

Service brakes are inboard wet disc brake on front and rear axles and include inching. Parking brakes are wet disc spring-applied hydraulic release on front axle.

Tires

| | |
|----------|---|
| Standard | Foam Filled Tires TM R4 18 x 22.5 Lug Tread |
| Optional | Air Tires AR01 44S/65 R22.5 Turf Tread Air Tires TM R4 18 x 22.5 Lug Tread |

Cab

- Adjustable Seat
- Horn
- Retractable Sunscreen
- Heat and Air Conditioning
- Reversing Camera
- Enclosed Cab
- Road Lights
- Certified ROPS/FOPS Structure
- Tilt & Auxiliary Hydraulics on Joystick
- Dual Joystick Controls

Steering 4-Wheel

Power steering
Operator Selectable 4-Wheel Circle, 4-Wheel Crab, 2-Wheel Front

Instruments

- Hourmeter
- Voltmeter
- Fuel Gauge
- DEF Gauge
- Engine Oil Pressure Gauge
- Temperature Gauge

Hydraulic System-Implement

Capacity 71.3 gal / 270 L
Load sense piston pump. Auxiliary hydraulics used for all attachments equipped with cylinders or other hydraulic components.

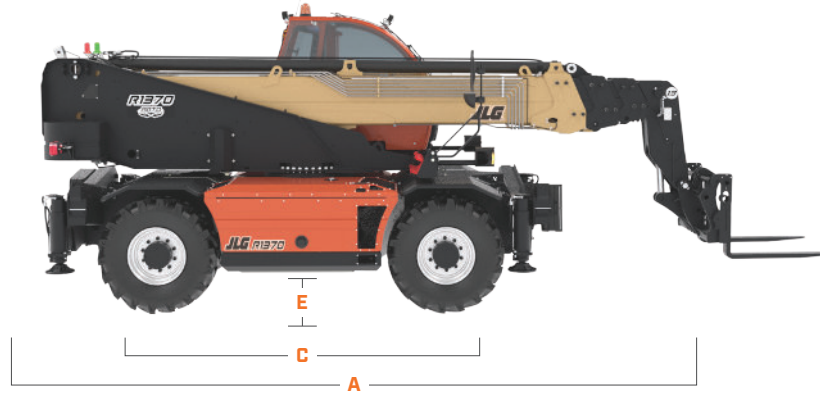
R1370

ROTATING TELEHANDLER



DIMENSIONS

All dimensions are approximate

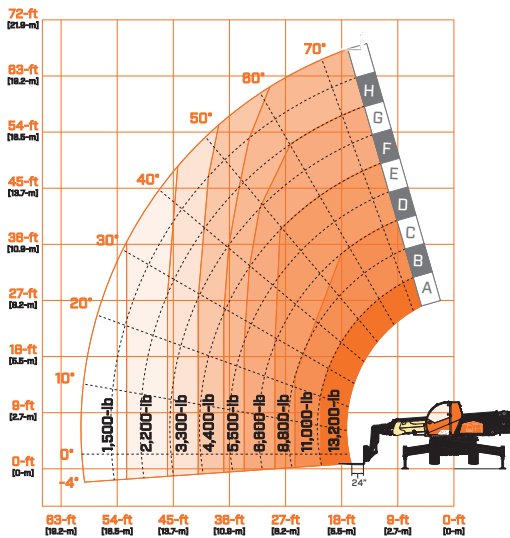


- A. Machine Length 281.5-in / 7150-mm
- B. Machine Width 93.7-in / 2380-mm
- C. Wheelbase 116.1-in / 2950-mm

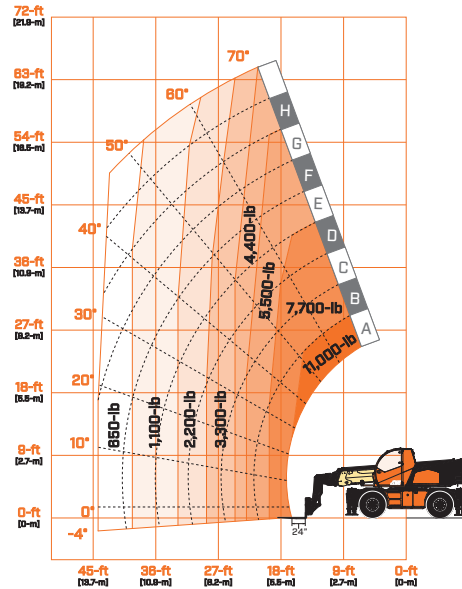
- D. Machine Height 119.3-in / 3030-mm
- E. Ground Clearance 14.2-in / 360-mm

LOAD CHART

Outriggers Down



Outriggers Up



We provide coverage for one (1) full year on the entire machine, two (2) full years or 2,000 hours on the drivetrain and cover all specified major structural components for five (5) years. Due to continuous product improvements, we reserve the right to make specification and/or equipment changes without prior notification.



JLG INDUSTRIES, INC.
Toll-free US 877-JLG-LIFT
JLG.com

An Oshkosh Corporation Company