



## FEATURES

- 76.5' (23.3 m) Outreach
- 660/1000 lbs (300/454 kg) Platform Capacity
- Continuous Rotation Turret
- GMG 4wd with Traction Control
- 8' x 3' (2.44m x .91m ) Platform
- 180° Platform Rotation
- Fully Proportional Drive/Lift
- Oscillating axle
- Foam Filled Tires
- Self-closing entry gate
- On-board diagnostic system
- Load sensing system
- Auto-leveling system



# SPECIFICATIONS

## 86 SJ-XC

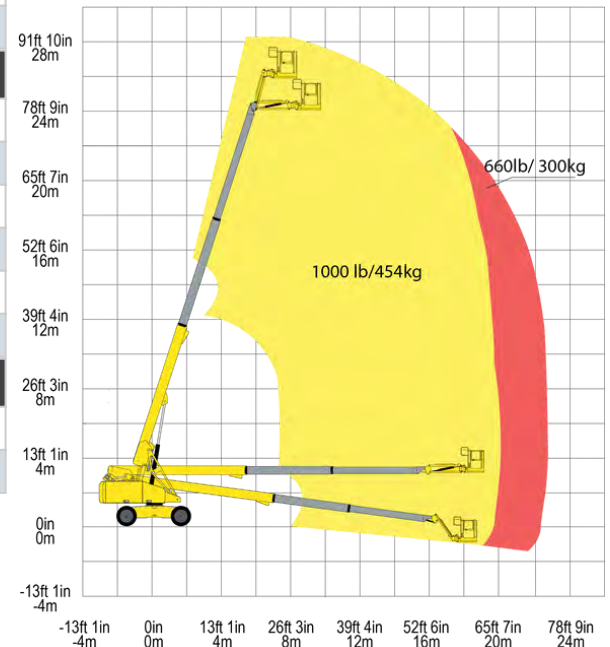
Measurements	US	Metric
Working height maximum	92' 6"	28.2 m
Platform height maximum	85' 11"	26.2 m
Horizontal outreach	76' 6"	23.3 m
Stowed length	41'	12.5 m
Stowed width	8' 2"	2.49 m
Stowed height	9' 2"	2.8 m
Platform length	8'	2.44 m
Platform width	3'	0.91 m
Jib length	6'	1.83 m
Wheelbase	10'	3.05 m
Ground clearance	1' 5"	0.42 m
Productivity	US	Metric
Platform capacity	660/1,000 lbs	300/454 kg
Drive speed	4.0 mph	6.2 km/h
Gradeability	45%	
Turning radius (inside)	12'	3.66 m
Turning radius (outside)	22' 6"	6.86 m
Turntable swing	continuous	
Platform rotation	180°	
Tail swing	5' 3"	1.6 m
Maximum slope	5°	
Max. wind speed	28 mph	12.5 m/s
Power	US	Metric
Diesel engine	Kubota V2607	
Engine power	72.4 hp	54 kW
Fuel tank capacity	40 gal	150 L
Voltage	12V dc	
Drive	4wd	
Hydraulic tank capacity	40 gal	150 L
Tire / Weight	US	Metric
Tire	15-625 Foam Filled	
ANSI / CE	41,670 lbs	18900 kg

## STANDARD EQUIPMENT

- Flashing beacon
- Emergency descent alarm
- Horn
- All motion alarm

## OPTIONS

- Extra capacity
- Generator 3.5kW
- Generator, welder ready
- Anti-crush system
- Hostile environment kit
- Control box flip cover
- Platform work lights
- Non-marking tires
- Cold climate hydraulic oil
- Cold climate engine heater
- Cold climate battery
- Power to platform



www.goGMG.com